

October 1, 2008

We are pleased to inform you of an artist portfolio on behalf of Barack Obama's 2008 presidential campaign and the Democratic National Committee. The portfolio is being printed by the Los Angeles-based artists workshop, Gemini G.E.L. We are very excited about this project and the opportunity to assist in such a worthwhile cause.

The portfolio contains 13 new prints in editions of 150 each by the following artists: John Baldessari, Jonathan Borofsky, Frank Gehry, Ann Hamilton, Jasper Johns, Ellsworth Kelly, Brice Marden, Julie Mehretu, Ken Price, Susan Rothenberg, Ed Ruscha, Richard Serra and Richard Tuttle.

With a donation of \$20,000 you will receive the complete portfolio of 13 prints as a gift (the prints are not available individually). If you are interested in reserving a portfolio, please send a check for the full amount, **made payable to the Obama Victory Fund** to Julie Walden c/o Obama Victory Fund, 1800 Century Blvd East #210 Los Angeles, California 90067.

If you have contributed the maximum donation \$28,500 to the Democratic National Committee in the last year, you can make the check payable to "Committee for Change." The maximum amount that can be contributed to all party committees over the 2007/2008 period is \$65,500.

The offering is limited to the first 150 respondents, and because it is anticipated that the portfolio will be gone very quickly, I encourage you to send your donation as soon as possible. Images of the prints and the official donation form are attached, and can also be viewed at [www.joniweyl.com](http://www.joniweyl.com). In the meantime, if you have questions about the donation, please contact Julie Walden at [jwalden@barackobama.com](mailto:jwalden@barackobama.com) or by phone at 310/277-2008 for more information.

Best regards,  
Gemini G.E.L. at Joni Moisant Weyl



## Artists for Obama

A portfolio of limited edition prints by 13 artists  
Each editions of 150  
Printed by Gemini G.E.L.  
In support of *Obama Victory Fund*

A \$20,000 donation confers eligibility for the complete portfolio of 13 (prints not available individually)

Checks for the full amount, made payable to *Obama Victory Fund*, should be sent to:

Obama Victory Fund  
1800 Century Boulevard East  
Suite 210  
Los Angeles, California 90067  
ATTN: Julie Walden

For additional information,  
email [JWALDEN@BARACKOBAMA.COM](mailto:JWALDEN@BARACKOBAMA.COM)

**(SEE VISUALS & DONATION FORM BELOW)**

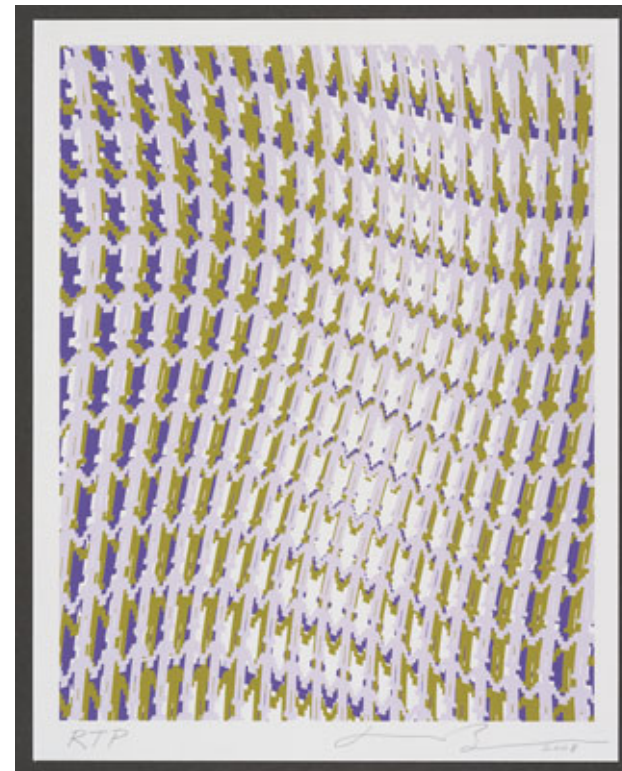


**Artists for Obama**  
A portfolio of limited edition prints by 13 artists  
Printed by Gemini G.E.L.

---



**JOHN BALDESSARI**  
*Raised Eyebrows/Furrowed Foreheads (Red, White and Blue)*, 2008  
7 color screenprint  
12" x 14"  
Edition: 150



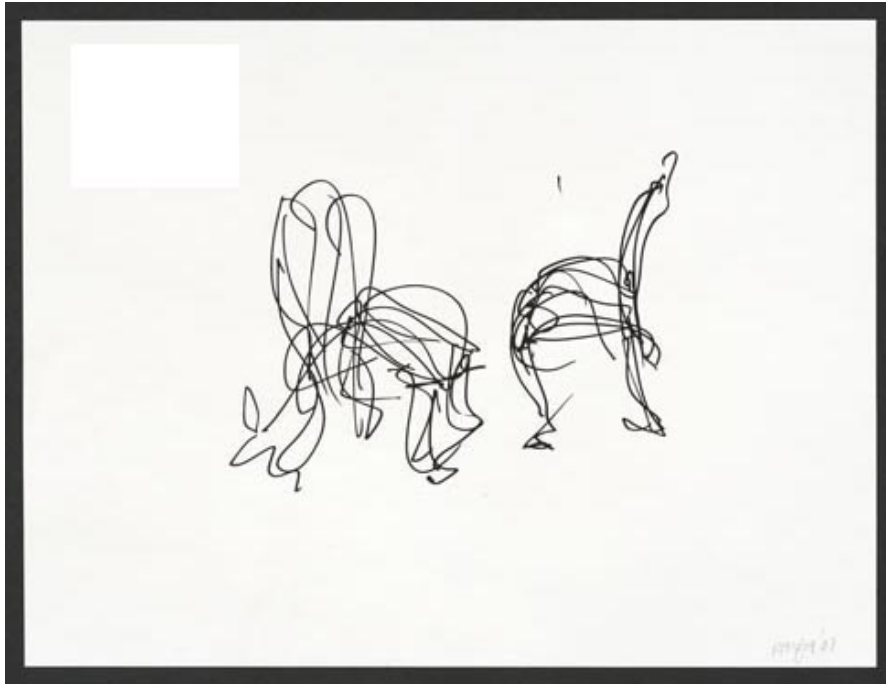
**JONATHAN BOROFKY**  
*Human Structures and the Light of Consciousness for Obama*, 2008  
3 color screenprint  
14" x 11 1/4"  
Edition: 150



## Artists for Obama

A portfolio of limited edition prints by 13 artists  
Printed by Gemini G.E.L.

---



FRANK GEHRY  
*Sitonme*, 2008  
1 color lithograph  
12" x 14"  
Edition: 150



ANN HAMILTON  
*O*, 2008  
1 color lithograph  
14" x 12"  
Edition: 150



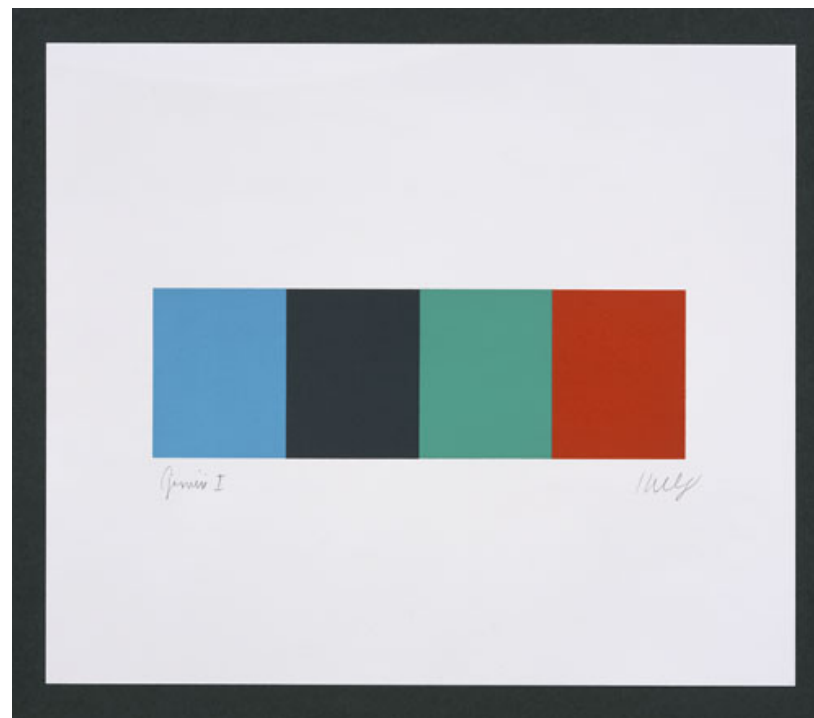
## Artists for Obama

A portfolio of limited edition prints by 13 artists  
Printed by Gemini G.E.L.

---



JASPER JOHNS  
*Untitled*, 2008  
1 color etching  
8 ½" x 12"  
Edition: 150



ELLSWORTH KELLY  
*Blue Gray Green Red*, 2008  
4 color lithograph  
12" x 14"  
Edition: 150



## Artists for Obama

A portfolio of limited edition prints by 13 artists  
Printed by Gemini G.E.L.

---



BRICE MARDEN  
*Etching for Obama*, 2008  
1 color etching  
14" x 12"  
Edition: 150



JULIE MEHRETU  
*Untitled (amulets)*, 2008  
1 color etching/chine-collé  
12" x 14"  
Edition: 150



## Artists for Obama

A portfolio of limited edition prints by 13 artists  
Printed by Gemini G.E.L.

---



**KEN PRICE**  
*Living with Rocks, 2008*  
3 color lithograph/screenprint  
14" x 14"  
Edition: 150



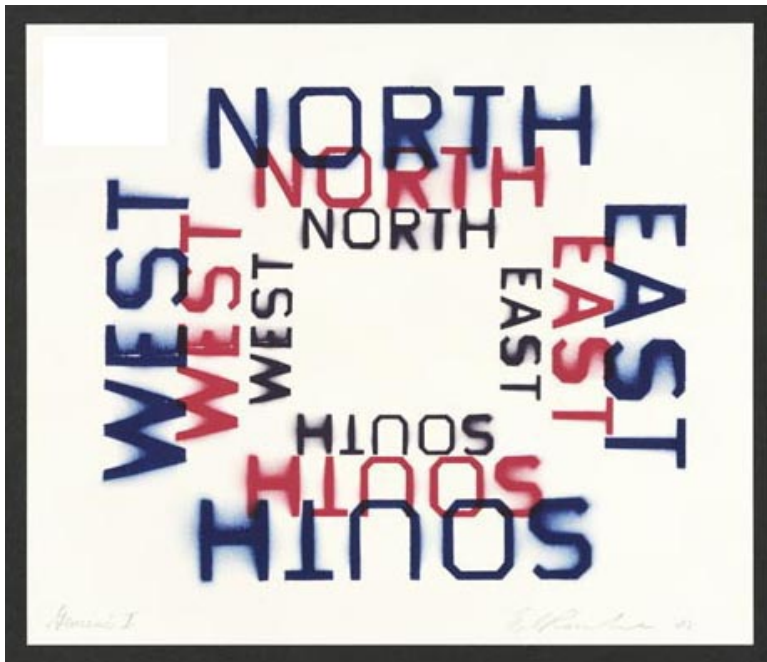
**SUSAN ROTHENBERG**  
*Twisted Cat, 2008*  
1 color lithograph  
14" x 14"  
Edition: 150



## Artists for Obama

A portfolio of limited edition prints by 13 artists  
Printed by Gemini G.E.L.

---



ED RUSCHA  
*All Points*, 2008  
3 color lithograph  
12" x 14"  
Edition: 150



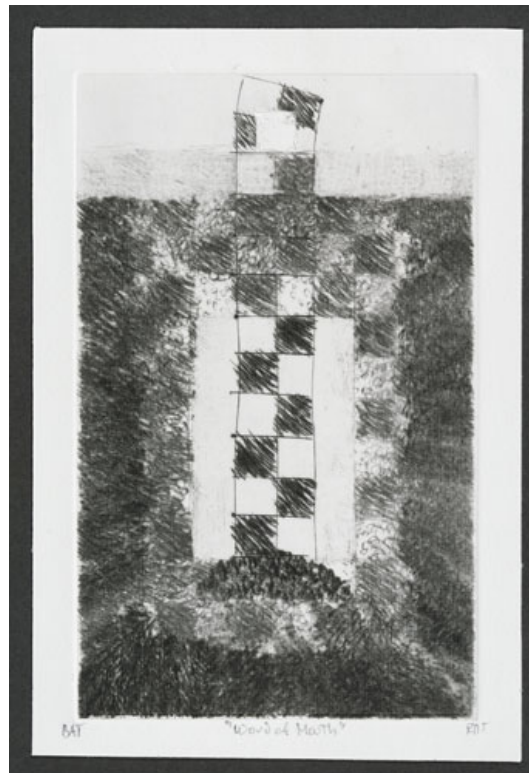
RICHARD SERRA  
*Promenade Notebook Drawing for Obama*, 2008  
1 color etching  
13 ½" x 10 ½"  
Edition: 150



## Artists for Obama

A portfolio of limited edition prints by 13 artists  
Printed by Gemini G.E.L.

---



RICHARD TUTTLE  
*Word of Mouth*, 2008  
1 color etching/chine-collé  
9" x 6"  
Edition: 150

The first \$2,300 of each contribution from an individual will be allocated to Obama for America and will be considered designated for the general election. The next \$28,500 of each contribution from an individual will be allocated to the Democratic National Committee. Any contributor may designate his or her contribution for a particular participant. (Participants are Obama for America and the DNC). The allocation formula above may change if any contributor makes a contribution that, when allocated, would exceed the amount that the contributor may lawfully give to either participant.

Please make checks payable to:  
**OBAMA VICTORY FUND**  
Attn: Julie Walden  
1800 Century Park East, Ste. #210  
Los Angeles, CA 90067

**Total Amount: \$** \_\_\_\_\_

Federal law requires us to use our best efforts to collect and report the name, mailing address, occupation and employer of individuals whose contributions exceed \$200 in an election cycle.

First & Last Name: \_\_\_\_\_

Address: \_\_\_\_\_

City/State/Zip: \_\_\_\_\_

If foreign address provide US passport number: \_\_\_\_\_

Employer: \_\_\_\_\_ Occupation: \_\_\_\_\_

Work Phone: \_\_\_\_\_ Work Fax: \_\_\_\_\_

Home Phone: \_\_\_\_\_ Email: \_\_\_\_\_

I certify that I am a U.S. citizen or legal permanent resident of the U.S.

**Signature:** \_\_\_\_\_

**Contribute by Personal Check:**

**Please make checks payable to "Obama Victory Fund" and mail to the address listed above.**

**Contribute by Credit Card:**

Please bill my personal credit card:  Visa  MasterCard  AMEX  Discover

Card Number: \_\_\_\_\_ Exp: \_\_\_\_\_

Name as it appears on the card: \_\_\_\_\_

Signature: \_\_\_\_\_

Second Name on Account, if Joint Account\*: \_\_\_\_\_

**\*Contributions will be evenly attributed between names.**

2nd Name Employer: \_\_\_\_\_ 2nd Name Occupation: \_\_\_\_\_

Second Signature for Joint Account: \_\_\_\_\_

**OVF Staff Name:** \_\_\_\_\_ **OVF Staff Signature:** \_\_\_\_\_

Obama Victory Fund does not accept contributions from currently registered federal lobbyists, registered foreign agents, political action committees, or minors under the age of 16. Federal law prohibits the acceptance of corporate contributions. Contributions and gifts to the Obama Victory Fund are not deductible for federal income tax purposes.

Paid for by Obama Victory Fund, a joint fundraising committee authorized by Obama for America and the Democratic National Committee.

CA268