



GEMINI G.E.L. <sup>AT</sup> JONI MOISANT WEYL

P R I V A T E   S A L E

July 11 – October 1, 2011

*Sale pricing quoted upon request; all prices include frame unless noted*

**RICHARD ARTSCHWAGER**

**Retail**



THE DISCOVERY OF UP AND DOWN 2008  
1-color etching  
46 x 32 3/4" Edition of 35, #18  
RA08-3432

\$ 3,500



THE DISCOVERY OF RIGHT AND LEFT 2008  
1-color etching  
18 1/2 x 24" Edition of 35, #18  
RA08-3433

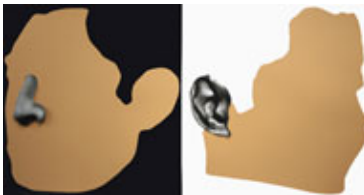
1,900

**JOHN BALDESSARI**



RAISED EYEBROWS / FURROWED FOREHEADS:  
FIGURE WITH GLOBE 2009  
14-color screenprint  
32 x 31" Edition of 70, #20  
JBA09-5328

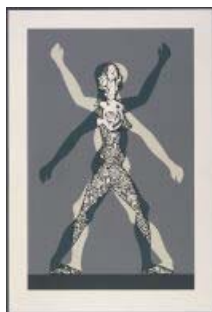
3,500  
*Unframed*



NOSES & EARS, ETC.: TWO PROFILES, ONE WITH  
NOSE (B&W); ONE WITH EAR (B&W) 2006  
2-layer, 7-color screenprint construction  
(mounted to Sintra and hand cut)  
framed 34 3/4 x 62 1/2 x 3" Edition of 45, #7  
JBA06-5307

15,600

**JONATHAN BOROFKY**



MALE / FEMALE 2000  
1-color lithograph/4-color screenprint  
63 x 43" Edition of 35, #22  
JB99-1428

5,200



GEMINI G.E.L. <sup>AT</sup> JONI MOISANT WEYL

P R I V A T E   S A L E

July 11 – October 1, 2011

*Sale pricing quoted upon request; all prices include frame unless noted*

**CECILY BROWN**

**Retail**



AUJOUR' HUI ROSE 2005  
4-color lithograph  
39 x 29 1/2" Edition of 75, #14  
CBR05-1528

\$ 2,600



UNTITLED 2005  
10-color lithograph  
40 x 29 1/2" Edition of 35, #14  
CBR05-1530

3,600

**VIJA CELMINS**



NIGHT SKY 1 (REVERSED) 2002  
3-color photogravure/aquatint/  
photo-etching/drypoint  
21 x 24 1/2" Edition of 65, #51  
VC02-3333

7,500



NIGHT SKY 2 (REVERSED) 2002  
3-color photogravure/aquatint/  
photo-etching/drypoint  
20 3/4 x 24 1/2" Edition of 65, #21  
VC02-3336

7,000  
*Unframed*



UNTITLED (WEB 4) 2002  
1-color photogravure/aquatint/drypoint  
20 1/2 x 24 1/4" Edition of 65, #20  
VC02-3335

12,600



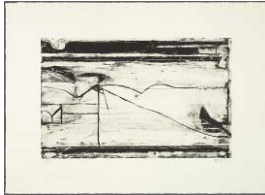
GEMINI G.E.L. <sup>AT</sup> JONI MOISANT WEYL

P R I V A T E   S A L E

July 11 – October 1, 2011

*Sale pricing quoted upon request; all prices include frame unless noted*

**RICHARD DIEBENKORN**



UNTITLED #2 1993  
1-color lithograph  
Estate stamped  
11 x 15" Edition of 53, #52  
RiDi92-1330

**Retail**

\$ 2,750

**SAM FRANCIS**



TURN 1972  
7-color screenprint  
28 x 35" Edition of 70, AP 9  
SF72-5019

10,000

**ALLEN GINSBERG**



UNTITLED #3 1998  
6-color lithograph/screenprint  
Estate Stamped  
30 1/4 x 23 1/4" Edition of 36, #28  
AG96-5238

850

**ROBERT GOBER**



UNTITLED 2002  
4-color lithograph  
51 x 36" Edition of 65, #16  
ROGO01-1485

18,900



GEMINI G.E.L. <sup>AT</sup> JONI MOISANT WEYL

P R I V A T E   S A L E

July 11 – October 1, 2011

*Sale pricing quoted upon request; all prices include frame unless noted*

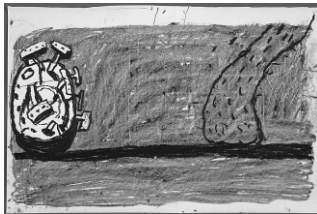
**PHILIP GUSTON**

***Retail***



REMAINS 1981  
1-color lithograph  
Estate Stamped  
19 1/2 x 29 3/4" Edition of 50, #17  
PG79-936

\$ 9,000  
*Unframed*



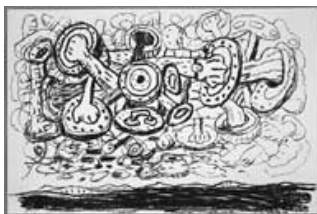
SCENE 1981  
1-color lithograph  
20 x 29 3/4" Edition of 50, #40  
PG79-930

4,900



RUG 1980  
1-color lithograph  
19 1/2 x 29" Edition of 50, #7  
PG79-929

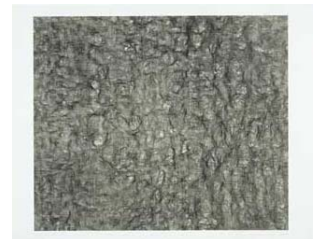
9,450



SKY 1983  
1-color lithograph  
20 x 29 3/4" Edition of 50, AP 10  
PG79-928

9,500

**ANN HAMILTON**



gauge (black) 2007  
2-color lithograph/screenprint  
38 x 56" Edition of 16, #12  
AH07-1554

3,500  
*Unframed*



GEMINI G.E.L. <sup>AT</sup> JONI MOISANT WEYL

P R I V A T E   S A L E

July 11 – October 1, 2011

*Sale pricing quoted upon request; all prices include frame unless noted*

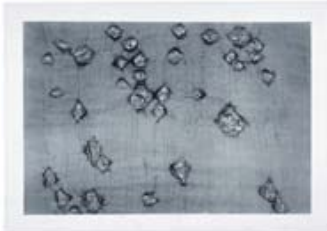
**ANN HAMILTON** - continued

**Retail**



score 2007  
2 cast-resin ear trumpets and unique grouping  
of 6 prints housed in wooden writing desk  
7 x 26 x 26" Edition of 15, #8  
AH06-2217

\$ 12,000



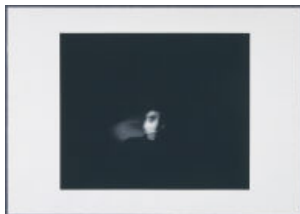
warp & weft II 2007  
1-color lithograph  
38 1/2 x 56" Edition of 10, #10  
AH07-1560

5,200



[#1-#7] from "reach" 2000  
Cast-steel and rusted spoons  
Dimensions vary Editions of 15, #10  
AH04-2204-2210

#1 & #5  
\$ 10,000  
#2 6,000  
#3 & #4  
10,000  
#6 & #7  
10,000



face...emmett 2003  
1-color photo-gravure  
Signed and numbered on verso  
29 1/2 x 42" Edition of 20, #11  
AH03-3343

1,500



face...inigo 2003  
1-color photo-gravure  
Signed and numbered on verso  
29 1/2 x 42" Edition of 20  
AH03-3355

1,500



face...mr. innui 2003  
1-color photo-gravure  
Signed and numbered on verso  
29 1/2 x 42" Edition of 20, #11  
AH03-3356

1,500



GEMINI G.E.L. <sup>AT</sup> JONI MOISANT WEYL

P R I V A T E   S A L E

July 11 – October 1, 2011

*Sale pricing quoted upon request; all prices include frame unless noted*

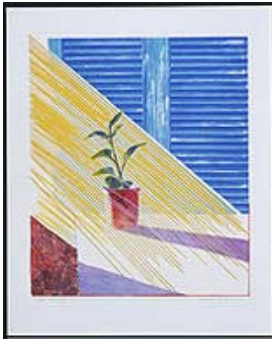
**MICHAEL HEIZER**



MONTANA SURVEY #1 1985  
2-color photo-etching/drypoint  
16 x 14 3/4" Edition of 42, #36  
MH81-3032

**Retail**  
\$ 1,500  
*Unframed*

**DAVID HOCKNEY**



SUN 1973  
8-color lithograph/silkscreen  
37 1/4" x 30 5/8" Edition of 98, #90  
DH73-501

50,000



PETER SCHLESINGER 1976  
1-color lithograph  
16 x 11 3/4" Edition of 90, #64  
DH76-773

6,000

**JASPER JOHNS**



UNTITLED 1992  
8-color lithograph  
38 7/8 x 31 1/8" Edition of 74, #72  
JJ92-1305

16,500



GEMINI G.E.L. <sup>AT</sup> JONI MOISANT WEYL

P R I V A T E   S A L E

July 11 – October 1, 2011

*Sale pricing quoted upon request; all prices include frame unless noted*

**DONALD JUDD**



UNTITLED 1971  
Stainless steel and acrylic  
4 x 23 x 27" Edition of 50, #21  
DJ71-2028

25,000

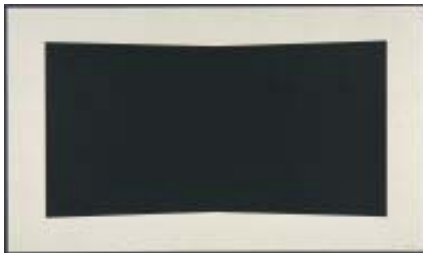
**ELLSWORTH KELLY**



BLACK CURVE 2000  
1-color lithograph  
30 x 22 7/8" Edition of 35, #26  
EK99-1450

*Retail*

\$ 7,600



BLACK 2001  
1-color lithograph  
34 11/16 x 59 1/8" Edition of 45  
EK01-1469

10,000  
*Unframed*

**TOBA KHEDOORI**



UNTITLED 2005  
1-color etching, printed & published  
to benefit Big Brothers Big Sisters of LA  
27 3/8 x 23 5/8" Edition of 50  
TK05-3406

2,750



GEMINI G.E.L. <sup>AT</sup> JONI MOISANT WEYL

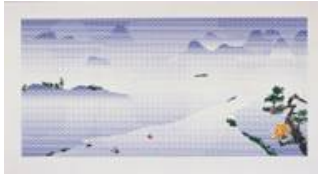
P R I V A T E   S A L E

July 11 – October 1, 2011

*Sale pricing quoted upon request; all prices include frame unless noted*

**ROY LICHTENSTEIN**

**Retail**



LANDSCAPE WITH BOATS 1996  
12-color lithograph/screenprint  
34 1/4 x 64" Edition of 60, # 37  
RL95-5224

90,000  
Unframed



LA SORTIE 1991  
6-color woodcut  
58 1/2 x 81 inches Edition of 60, #40  
RL90-1221

\$ 90,000

**MALCOLM MORLEY**

**Retail**



FOKKER DVII 2001  
19-color screenprint/lithograph  
45 1/4 x 32 1/4" Edition of 35, #19  
MM01-1463

\$ 4,100



FOKKER DVIII 2001  
15-color lithograph/screenprint  
45 1/4 x 32 1/2" Edition of 35, #19  
MM01-1464

4,100



EROTIC FRUITOS 1993  
10-color intaglio  
47 3/4 x 35 1/2" Edition of 49, #22  
MM89-3149

4,400





GEMINI G.E.L. <sup>AT</sup> JONI MOISANT WEYL

P R I V A T E   S A L E

July 11 – October 1, 2011

*Sale pricing quoted upon request; all prices include frame unless noted*

**ELIZABETH MURRAY**



LULU LEAPS 1995  
5-color intaglio  
sheet 12 3/4 x 10 1/2" Edition of 39, #21  
EM94-3220

**Retail**  
\$ 1,300

**BRUCE NAUMAN**



SOFT GROUND ETCHING - YELLOW 2007  
2-color etching  
30 3/4 x 34" Edition of 50, #8  
BN06-3408

7,100



SOFT GROUND ETCHING - GREEN 2007  
2-color etching  
29 x 34 1/4" Edition of 50, #8  
BN06-3410

7,100



COCKEYE LIPS (from INFRARED OUTTAKES) 2006  
Photographed by Jack Fulton (1968)  
Epson UltraChrome K3 inkjet print  
20 x 28" Edition of 60, #7  
BN06-9006

5,900



OPENED EYE (from INFRARED OUTTAKES) 2006  
Photographed by Jack Fulton (1968)  
Epson UltraChrome K3 inkjet print  
20 x 28" Edition of 60, #7  
BN06-9009

5,900



UNTITLED (From "Fingers and Holes" series) 1994  
Monoprint produced from screen matrix  
(color of each print varies)  
35 1/4 x 35" Edition of 90, #60  
BN94-182

8,750



GEMINI G.E.L. <sup>AT</sup> JONI MOISANT WEYL

P R I V A T E   S A L E

July 11 – October 1, 2011

*Sale pricing quoted upon request; all prices include frame unless noted*

**BRUCE NAUMAN** - continued

**Retail**



VERSO RECTO (STATE I) 1998  
3-color lithograph/screenprint  
22 1/4 x 28 1/2" Edition of 50, #21  
BN98-3266A

\$ 4,300



VERSO RECTO (STATE II) 1998  
2-color lithograph/screenprint  
22 1/4 x 28 3/4" Edition of 50, #21  
BN98-3266B

4,300



HOLDING HANDS ALL THUMBS 1998  
1-color etching  
22 1/2 x 28" Edition of 50, #21  
BN98-3268

4,300



FLOOR DRAIN 1985  
1-color drypoint/aquatint  
39 1/8 x 28" Edition of 32, #4  
BN83-3085

10,600

**CLAES OLDENBURG**



PROFITEROLE - GREY STATE 1990  
5-color lithograph  
31 x 40 1/2" Edition of 58, #46  
CO89-1215

4,500  
*Unframed*



GEMINI G.E.L. <sup>AT</sup> JONI MOISANT WEYL

P R I V A T E   S A L E

July 11 – October 1, 2011

*Sale pricing quoted upon request; all prices include frame unless noted*

**CLAES OLDENBURG – continued**

**Retail**



NOTES (KASSEL) 1968  
12-color lithograph/embossing  
22 11/16 x 15 3/4" Edition of 100, #6  
CO68-180

\$ 5,400



NOTES (DRUM SET) 1968  
9-color lithograph  
22 11/16 x 15 3/4" Edition of 100, #6  
CO68-183

5,400

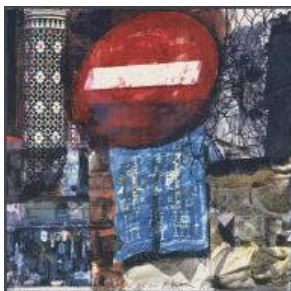
**DARRYL POTTORF**



SOAK AND WET DE MARRA KECH 2000  
8-color screenprint with Opencil drawing  
36 x 27" Edition of 40, #23  
DP99-5274

2,500

**DARRYL POTTORF & ROBERT RAUSCHENBERG**



QUATTRO MANI / MARRAKECH III 2000  
18-color screenprint  
36 x 36" Edition of 50, #30  
DP/RR99-5271

6,500



GEMINI G.E.L. <sup>AT</sup> JONI MOISANT WEYL

P R I V A T E   S A L E

July 11 – October 1, 2011

*Sale pricing quoted upon request; all prices include frame unless noted*

**KEN PRICE**

***Retail***



GREEN TURTLE CUP 1971  
19-color screenprint  
57 x 40" Edition of 75, #49  
KP71-5007

\$ 10,000



CHAIRS, TABLE, RUG, CUP 1971  
14-color screenprint  
51 1/2 x 41 1/2" Edition of 75, #38  
KP71-5010

12,000

**ROBERT RAUSCHENBERG**



GOSSIP 2000  
11-color screenprint  
29 3/4 x 22" Edition of 50, #35  
RR99-5267

8,600



REUNION 2000  
12-color screenprint  
31 1/2 x 23" Edition of 50, #34  
RR99-5260

8,600



GEMINI G.E.L. <sup>AT</sup> JONI MOISANT WEYL

P R I V A T E   S A L E

July 11 – October 1, 2011

*Sale pricing quoted upon request; all prices include frame unless noted*

**ROBERT RAUSCHENBERG** - continued

**Retail**



FENCE 1991  
4-color lithograph  
44 1/2 x 30" Edition of 57, #23  
RR91-1283

\$ 12,600



RUST PURSUIT 1991  
4-color lithograph  
30 x 44" Edition of 53, #37  
RR91-1277

9,000  
*Unframed*



TRUTH 1982  
Unique paper and fabric collage made in the  
People's Republic of China  
30 1/2 x 26 1/2" Series of 70 unique works  
RR82-14

55,000



TIBETAN LOCKS (CURTAIN) 1986  
Multiple sculpture with photo-screened decals  
and handpainting on steel  
30 x 30 x 11 1/2" Edition of 21, AC 5  
RR86-2143

20,000



ROOKERY MOUNDS-LEVEL 1979  
4-color lithograph  
41 x 31" Edition of 50, #18  
RR79-900

15,000  
*Unframed*



GEMINI G.E.L. <sup>AT</sup> JONI MOISANT WEYL

P R I V A T E   S A L E

July 11 – October 1, 2011

*Sale pricing quoted upon request; all prices include frame unless noted*

**ROBERT RAUSCHENBERG** - continued

**Retail**



ROOKERY MOUNDS-CRYSTAL 1979  
3-color lithograph  
41 x 31" Edition of 50, #54  
RR79-898

\$ 15,000  
*Unframed*



ROOKERY MOUNDS - GRAY GARDEN 1979  
4-color lithograph  
41 x 31" Edition of 55, #27  
RR79-896

15,500



RINGER 1974  
Transfer collage on fabric  
70 x 36" Edition of 31, #28  
RR74-686

48,000



HORSEFEATHERS THIRTEEN - IV 1972  
Color lithograph/screen/pochoir/  
embossing with unique collage  
27 7/8 x 22 1/2" Edition of 89, #75  
RR72-473

10,500



GEMINI G.E.L. <sup>AT</sup> JONI MOISANT WEYL

P R I V A T E   S A L E

July 11 – October 1, 2011

*Sale pricing quoted upon request; all prices include frame unless noted*

**DOROTHEA ROCKBURNE**

**Retail**



W.I.M.P. #2 1999  
9-color lithograph/screenprint  
41 x 32" Edition of 39, #15  
DR98-1411

\$ 4,400



DEVINE RAY 1983  
9-color lithograph on Transpagra, printed both  
sides, mounted on 100% ragboard  
40 x 35" Edition of 44, #10  
DR81-1019

7,500

**JAMES ROSENQUIST**



APPEARANCE 1982  
2-color aquatint/drypoint/etching  
33 1/2 x 26 1/2" Edition of 59, #36  
JR80-3043

5,500



"WHEN A LEAK...B&W" 1982  
7-color lithograph  
50 1/2 x 59" Edition of 25, #16  
JR80-969A

4,500  
*Unframed*



GEMINI G.E.L. <sup>AT</sup> JONI MOISANT WEYL

P R I V A T E   S A L E

July 11 – October 1, 2011

*Sale pricing quoted upon request; all prices include frame unless noted*

**SUSAN ROTHENBERG**

***Retail***



PUPPET SERIES #1 2008  
1-color mezzotint  
16 1/2 x 16" Edition of 50, #17  
SR08-3434

\$ 1,950



PUPPET SERIES #2 2008  
1-color mezzotint  
16 1/2 x 16" Edition of 50, #17  
SR08-3435

1,950



SLIP 2003  
6-color lithograph  
37 1/4 x 42" Edition of 56, #24  
SR02-1494

3,800



SLIP (STATE) 2003  
3-color lithograph  
31 x 41 1/8" Edition of 17, #9  
SR02-1494A

4,100



GROUP 2003  
1-color lithograph  
35 1/2 x 28 1/2" Edition of 60, #24  
SR02-1495

2,650





GEMINI G.E.L. <sup>AT</sup> JONI MOISANT WEYL

P R I V A T E   S A L E

July 11 – October 1, 2011

*Sale pricing quoted upon request; all prices include frame unless noted*

**ED RUSCHA**

***Retail***



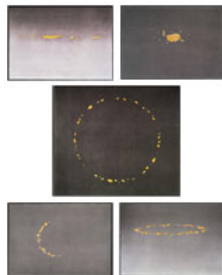
STICK UP... 2007  
3-color lithograph  
19 1/2 x 15 1/2" Edition of 35, #20  
ER06-1534

\$ 2,800



LISTEN IF YOU EVER TELL... 2007  
3-color lithograph  
19 1/2 x 15 1/2" Edition of 35, #20  
ER06-1535

2,800



VARIOUS CHEESES 1976  
Complete set of 5 lithographs  
Dimensions vary Edition sizes vary, RTP  
ER75-732-736

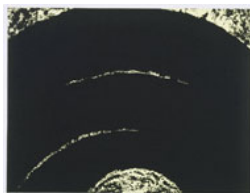
24,000



1984 1967  
2-color lithograph/watercolor  
20 x 25" Edition of 60, #41  
ER67-149

11,000  
*Unframed*

**RICHARD SERRA**



PATHS AND EDGES #9 2007  
1-color etching  
Signed and numbered on verso  
20 x 26 1/2" Edition of 60  
RS07-3421

5,300  
*Unframed*



---

GEMINI G.E.L. <sup>AT</sup> JONI MOISANT WEYL

P R I V A T E   S A L E

July 11 – October 1, 2011

*Sale pricing quoted upon request; all prices include frame unless noted*

**RICHARD SERRA** - continued

***Retail***



TRAJECTORY #1 2004  
1-color etching  
67 x 48" Edition of 48, #13  
RS04-3376

\$ 12,500